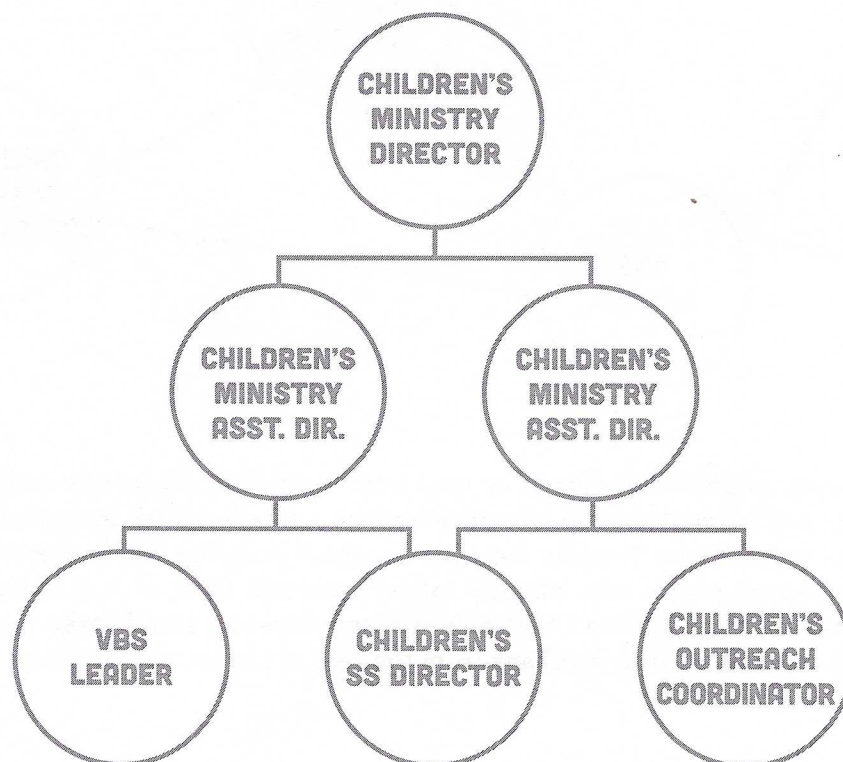


ADMINISTRATION & MANAGEMENT

RESPONSIBILITY

Who is responsible? And for what?

If you're the only leader, it all centers on you, which makes the responsibility question easy to answer, but the responsibility can be overwhelming! If you have a co-leader or an assistant, the answer isn't as clear or easy. One co-leader would carry equal responsibility while an assistant leader would carry less responsibility. Titles tell you one thing, but personalities and drive and how you relate to each other make this more dynamic than a simple chart. But a chart can help to clarify responsibilities and roles. Linear and hierarchical thinkers often diagram this in the shape of a pyramid. It could look something like this:



While this diagram gives clarity regarding who reports to whom, and who is above or below another person, in real ministry situations this doesn't always work. Sometimes the Director at the top has direct interaction with the VBS Leader without going through the diagrammed Assistant Director. Or the VBS Leader might interact directly with the Children's Outreach Coordinator without going up the chain of command, and then down the chain of command. Leaders who feel more comfortable with a flexible organizational model might set aside the hierarchical diagram and replace it with a more interactive one such as this: →